

AIRTREND Ltd
Predstavništvo u Beogradu
Kumanovska 14, 11000 Beograd
Tel: 011/3836886, 3085740
Faks: 011/3444113
e-mail: gobrid@eunet.rs
web: www.airtrend.rs



AIR DIFFUSION

CHILLED BEAMS

CREATING THE PERFECT FIT



» FALSE CEILING
ADAPTATIONS
FOR FLÄKTGROUP
CHILLED BEAMS

As standard FläktGroup chilled beams are made for a T-bar grid in false ceilings with module size 600 mm. In this installation the T-bar grid is visible, and ceiling tiles and chilled beams are placed in the T-bar with the edges of tiles and chilled beam hidden by the profile. For the standard application, the width of FläktGroup chilled beam is 594 mm to fit perfectly in the 600 module size.

But there are many variants of false ceiling systems on the market and FläktGroup has extensive experience of perfectly matching the chilled beams to various false ceiling types. Normally the edge of the chilled beam need to be adapted to fit the different false ceilings, but sometimes also the length and width is changed from standard. In some instances the chilled beam cannot have the same edge as the false ceiling tiles.

On the following page you can find adaptations for a variety of false ceiling systems that we can supply.

Let us support you
on your next project
– contact your local
sales representative
» flaktgroup.com

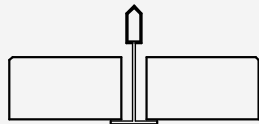
FläktGroup®

False ceiling adaptations for FläktGroup Chilled Beams

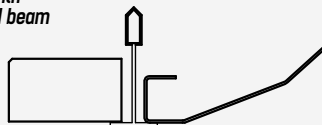
Ecophon Focus A15/A24 (Standard)

Width tile: 592 mm
Width chilled beam: 594 mm

Grid



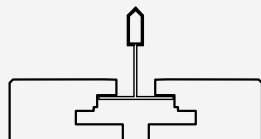
Grid with chilled beam



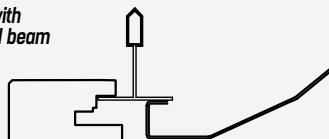
Ecophon Focus DG/Rockfon M

Width tile: 592 mm
Width chilled beam: 592 mm

Grid



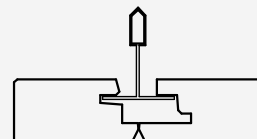
Grid with chilled beam



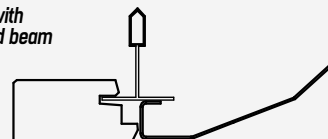
Ecophon Focus Ds/Rockfon X

Width tile: 600 mm
Width chilled beam: 598 mm

Grid



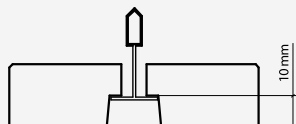
Grid with chilled beam



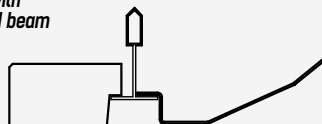
Ecophon Focus E15

Width tile: 585 mm
Width chilled beam: 583 mm

Grid



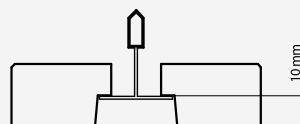
Grid with chilled beam



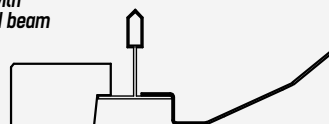
Ecophon Focus E24

Width tile: 576 mm
Width chilled beam: 574 mm

Grid



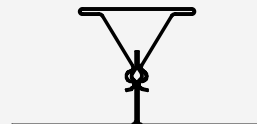
Grid with chilled beam



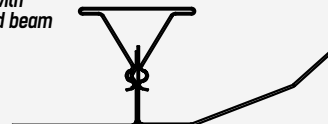
Dampa Clip In

Width tile: 600 mm
Width chilled beam: 599 mm

Grid



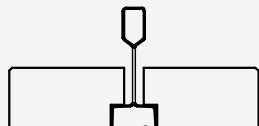
Grid with chilled beam



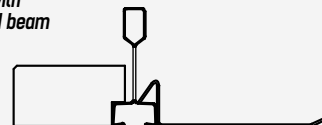
Fineline

Width tile: 584/661 mm (L=1336 mm)
Width chilled beam: 582/659 mm (L=1334 mm)

Grid



Grid with chilled beam



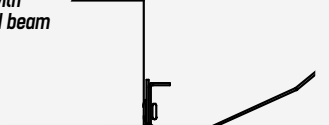
Plaster board

Width chilled beam: 596 mm (L=xx90 mm)

Grid



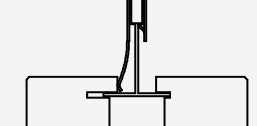
Grid with chilled beam



Ecophon Focus LP

Width tile: 580 mm (L=600/1200 mm)
Width chilled beam: 580 mm (L=xx98 mm)

Grid



Grid with chilled beam

